

# ULTRAMAX™ MIMO B 5-in-1

## High Performance External Antenna

ULTRAMAX MIMO B 5-in-1 is a full outdoor antenna designed specifically to provide high performance connectivity for Fleet and Public Safety vehicles and assets connecting to almost any vehicular router or modem. This antenna offers two high gain Cellular/LTE/MIMO antennas, which include support for LTE Band 14 for FirstNet, two high gain Wi-Fi antennas, and a GNSS antenna inside a single robust and compact housing.

- Built-in ground plane (to accommodate installation on non-metal surfaces)
- 2 x Wideband LTE/cellular Elements (MIMO)
- 2 x 2.4 & 4.9-6 GHz Wi-Fi/WiMax Elements (MIMO)
- 1 x GNSS Element
- Five embedded antenna technologies that operate over multiple bands in one housing
- Leading LTE performance while in coexistence with multiple other embedded antenna technologies
- Lower profile and smaller footprint than competing solutions
- High gain provides bigger cellular footprint
- Available in black or white
- US Patent 10109918



Optimal MIMO Performance for LTE



Compact and Robust UV Resistant Housing



Full Outdoor Installation Ready



Customizable Cables and Connectors to Connect to Any Modem



Flexible Mounting Options



GNSS



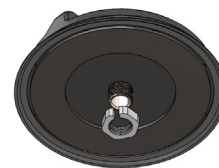
Low loss cable accessories



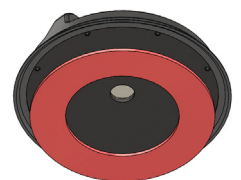
Fast custom turnaround time

## Descriptions/Applications

The ULTRAMAX MIMO B antenna builds on the best in class RF performance, leading design features, and extended operational life of our highly successful Fleet and Public Safety Antenna products. Like all our antennas, this product has been designed to be robust to withstand the natural hazards a vehicle faces including vibration, hot, cold, ice, salt, dirt, car washes, and tree branch sweeps. Our antennas typically outlast the life of a vehicle.



Bolt Mount



Adhesive Mount

## Standard Configurations

**AP-CCWWG-BQ-S22222-RP34-BL-15**

MIMO Cell/LTE x 2, Wi-Fi x 2, & GNSS, Threaded Bolt Mount, SMA on Cell/LTE & GNSS, RP-SMA on Wi-Fi, Black, 15ft coax

**AP-CCWWG-BA-S22222-RP34-BL-15**

MIMO Cell/LTE x 2, Wi-Fi x 2, & GNSS, Adhesive Mount, SMA on Cell/LTE & GNSS, RP-SMA on Wi-Fi, Black, 15ft coax

*Also available in color white, customizable cable lengths up to 35 feet, and other connector variations.*

### Electrical Data

Frequency Range	Elements 1 & 2	698-960/1700-2700 MHz		
	Elements 3 & 4	2.4/4.9-6.0 GHz		
	Element 5	1550~1610 MHz		
Operational Bands	Elements 1 & 2	LTE/Cellular		
	Elements 3 & 4	Wi-Fi		
	Element 5	GPS L1/GALILEO E1/GLONASS G1/BeiDou B1/QZSS L1		
Peak Gain: Isotropic	Elements 1 & 2	698-960 MHz	4.9 dBi	
		1710-2700 MHz	7 dBi	
	Elements 3 & 4	2.4 GHz, 5.5 GHz		7 dBi, 5 dBi
		Element 5	30.50 dBi	
Isolation	Elements 1 & 2	> 10 dB		
	Elements 3 & 4	> 30 dB		
Correlation Co-efficient	Elements 1 & 2	< 0.1		

### Environmental Data

Hazardous Substances	RoHS Compliant
Temperature	-40°C to 65°C (-40°F to + 149°F) Operating and Storage conformance to IEC 60068
Humidity (Non-Condensing)	5% to 96% Operating and Storage conformance to IEC 60068
Water Ingress	IP67
Military Spec	MIL-STD 810 conformance to vibration

### Mounting Data

Dimensions	Height	2.183" (55.5 mm)
	Width	7.074" (179.7 mm)
	Length	7.650" (194.3 mm)
Color	Black (BL) or White (WH)	

### Cable Data

Cell/LTE & GNSS	Type	CFD195 Low Loss	Wi-Fi	CFD195 Low Loss
	Diameter	0.195" (4.953 mm)		0.195" (4.953 mm)
	Length	1 feet		1 feet
	Termination	SMA Male		RP-SMA Male

### GNSS Data - Ceramic Patch Antenna Specification

Bandwidth	1561 – 1602 MHz
Gain@Zenith	2.5 dBi
Polarization	R.H.C.P.
Axial Ratio	3.0 dB Typ.

### GNSS Data - LNA Specification

Noise Figure	1.2 dB
Gain	28 dBi
Voltage	3.3V~5.6V
Current	9.6±1mA@3.3V